



REPORT

From the Supervisor –
Kathy Penner



TAKING CARE OF EACH OTHER...

Wheeling Township consistently demonstrates dedication to its mission, “Neighbors Helping Neighbors,” in many ways, including access to reliable transportation, support groups, the new Wheeling Township Mental Health Board, Emergency and General Assistance for those who qualify, referrals and help with property taxes and Medicare, among others. Our substantial and plentiful Food Pantry successfully serves clients through its ‘client choice’ shopping model, and, at this time of year, many residents are setting up appointments for LIHEAP (Low Income Home Energy Assistance Program) and Open Enrollment Medicare Part D 2024 drug plans help.

Before I talk more about the Wheeling Township Community Mental Health Board and the survey they’re asking Township households to complete, I’d like to say **thank you to residents**. Over the past year, hundreds of residents once again made a difference to their neighbors by giving back through monetary and food donations. I cannot emphasize enough just how remarkably compassionate the residents of Wheeling Township are. The amount of support we continue to receive so that other residents don’t go without is truly unbelievable. From Food Pantry donations to fresh produce from your gardens, **we thank you**.

For residents who might be interested in helping others this **Holiday Season**, there are several fun opportunities: our Thanksgiving Basket Program and the Adopt-A-Family Christmas Program. Whether buying and wrapping gifts for a family in need or filling a basket to the brim with Thanksgiving goodies, the end result is the same: generosity. I look forward to coming into the Township every Holiday Season, as the building will be overflowing with donated baskets of food and wrapped presents for families in need. Be sure to read page 5, which will provide you with all the details on how you can participate in those specific programs. For those residents wishing to make a difference to those serving in the Military, consider making a donation as part of our annual Operation Support Our Troops donation drive (info located on page 7).

You’ll find a Community Mental Health Survey in the center of this edition of the newsletter. The Wheeling Township Community Mental Health Board is asking for **input from every household in the Township**. Established in January 2023, the Wheeling Township Community Mental Health Board is the result of a local ballot referendum and is comprised of seven appointed community members. Based on your input, the Wheeling Township Community Mental Health Board will prioritize key areas of concern for local citizens and how to positively impact those needs. The Community Mental Health Board complements the Township’s current, already-proven mission of supporting local human service and mental health non-profit organizations. It is vital that your input be heard, so please complete and return the enclosed survey by October 20, 2023. Completed surveys may be mailed to, or dropped off at, our office: 1616 N. Arlington Heights Rd., Arlington Heights 60004, or emailed to wt708mhb@wheelingtowship.com.

All of us at Wheeling Township are indebted to you – our residents who remain steadfastly focused on helping their neighbors in need every year. We are grateful to those who show compassion, grace, and understanding, and we hope you will take the time to get involved with some of our annual Holiday programs. I also hope you’ll take the time to complete the Community Mental Health Survey.

All of us wish you and your family a happy, healthy and safe Holiday Season.

IN THIS ISSUE...	
Assessor’s Office	2
Clerk’s Office	3
Backpack Program	3
Road Management	4
Be A Santa This Season	5
Senior & Disability News	6
Elected Officials	8
Agencies Funded	8
Food Pantry	8



FROM THE ASSESSOR'S OFFICE

Ken Jochum

In the Township Assessor's Office, we have begun the 2023 appeals season during which you will be able to appeal your property assessments either with the Cook County Assessor or with the CC Board of Review. Keep watching our website or call for information regarding the appeals process.

Tax bills for 2022, (2nd installment), normally sent in August will likely be mailed in during the October, December timeframe payable in 2023, according to some County officials. Our website will keep you up to date as we receive further information

The Cook County Treasurer, Maria Pappas, has published an excellent report entitled, "How Illinois Property Tax System Works." I encourage everyone to read the report at www.cookcountytreasurer.com or stop into our office for a copy while supplies last.

ASK THE TOWNSHIP ASSESSOR

I am often asked why Illinois has an equalization factor, (commonly called an equalizer). To answer this question we are using, verbatim, a portion of the aforementioned, Treasurer's report:

The Illinois Department of Revenue uses the assessed values to calculate state funding for schools, highways and public assistance, with property tax-rich districts getting less state funding. It also uses them to determine tax and borrowing limitations within taxing jurisdictions, because those limitations are all based in part on the assessed values within each jurisdiction.

Those calculations for state funding, however, would not result in fair and equitable distribution of state funds if the state did not adjust the assessment results produced by assessors in the state's 102 counties.

That's because Cook County assesses properties at different percentages of fair cash value than the rest of the state and some assessors under or overvalue properties within their jurisdictions.

In addition, the state is required to ensure that the property tax burden is distributed equally among property owners throughout Illinois, which can only be done if all assessments reflect the same percent of fair cash value.

The Illinois Department of Revenue "equalizes" assessments across the state so they are uniform at 33 1/3% of fair cash value. To do that, The Department of Revenue conducts an "assessment/sales ratio study" that compares a sampling of assessments to actual sales, to see if assessments were accurate, while also accounting for the differing percentages of assessed values.

So, in counties outside of Cook, where assessors strive to value all property for tax purposes at 33 1/3%, it's only when assessors miss the mark- determined by the assessment/sales ratio study- that adjustments need to be made.

If assessments in a county or township do hit that mark, they are simply multiplied by 1, meaning they don't change. But if they fall short of 33 1/3%, they will be multiplied by a number slightly greater than one. For example, in DuPage County- Illinois' second-largest county, the multiplier for bills sent out in 2021 was 1.034.

If assessments as a whole are above 33 1/3%, they would be multiplied by a number that's less than 1- although that is highly unlikely, given that under-assessments are far more common than over-assessments.

Cook County, however is much more complicated when it comes to setting the equalization factor. Right from the start, the numbers will fall well below that 33 1/3% because all residential property is assessed at 10%, and commercial and industrial properties are assessed at 25%. And historically, Cook County has tended to under-value its properties as a whole.

As a result, bringing the overall assessment level in Cook up to 33 1/3% requires that they be multiplied by a number far greater than 1. In recent decades the multiplier in Cook has been at least 2, and sometimes higher than 3.

EXCITING NEWS:

Shortly we will be announcing a seminar designed specifically for FIRST TIME home buyers in Wheeling Township to explain the tax system. Stay tuned for further information.

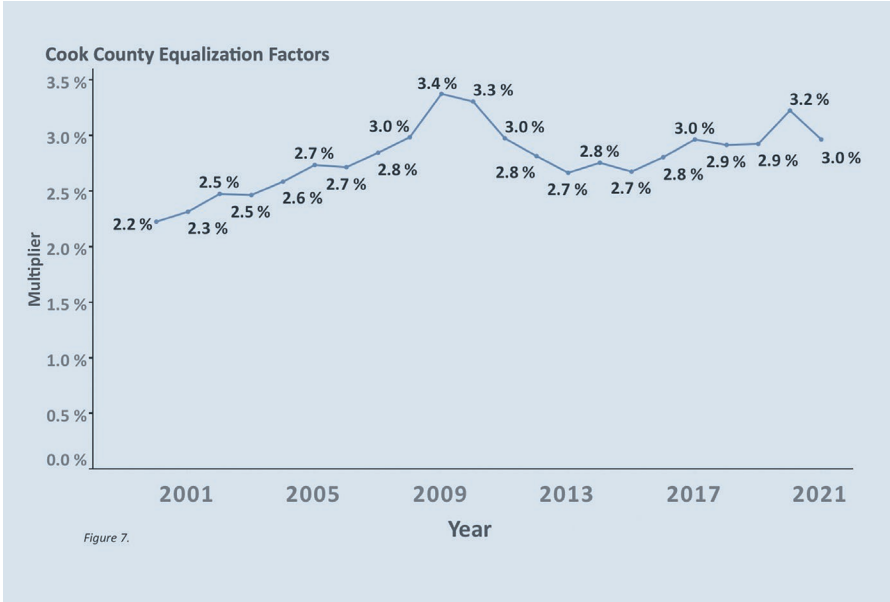


Figure 7.

FROM THE CLERK'S OFFICE

Joanna Gauza

VOTER REGISTRATION

Although we do not have any elections scheduled for this year, if you want to vote in future elections, now is time to make sure you are registered. If you are not registered, have just moved into the Township, have moved to another residence in the Township, or changed your name, you need to register to be able to vote in these elections. You can register the following ways:

1. Register to Vote at Wheeling Township. You'll need two forms of identification (one showing your current address), to be a citizen of the United States, be 18 years of age by the next General Election Day, and have lived in the Township for at least 30 days before the election. 17 year-olds that will be 18 years-old by the next Election date can register and vote in the next Election. For naturalized citizens, you must prove the date of your naturalization.

2. Register Online. If you have an Illinois Driver's License or Illinois State ID, you may register online at cookcountyclerk.com/agency/register-vote. If you do not have a driver's license or state ID, go to the same website and complete the form online, print, sign and mail it to the address on the application. If you register by mail, you must bring a valid state issued picture identification when you vote for the first time.



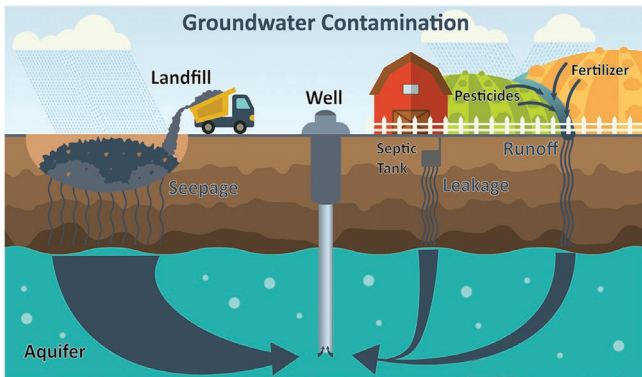
The School Year Started Bright!!



Thank you to everyone who donated new, filled backpacks for the low-income students in our area – 151 brand new backpacks featuring everything from Spiderman and the Squish Squad to Pokemon and Cinderella arrived, filled with pencils, markers, and all sorts of school necessities. The kids really enjoyed getting to choose whatever backpack they wanted – all because the residents of Wheeling Township are so generous. ***Their school year started bright because of you. Thank You!***

TOWNSHIP ROAD MANAGEMENT

Groundwater Protection



Many Township homes, apartments and businesses in the unincorporated areas of Wheeling Township are not connected to a public water or sanitary sewer system. They are instead connected to an Illinois Environmental Protection Agency (IEPA) regulated water system and rely on a groundwater aquifer as their water source for their private wells. They have private septic fields to treat their sanitary sewerage waste water. This public system requires that land owners regularly test their drinking water, routinely pump septic tanks, and flush tile systems to protect the groundwater aquifer from contamination since it's shared by many land owners. The prevention of groundwater and well contamination remains important in protecting the health of individuals and pets using the water.

Over time, individuals have disposed solid and liquid waste on - and into - the ground. Harmful substances (liquids and solids) buried or placed on the surface can let pollutants seep through and

contaminate groundwater. Substances that potentially harm water quality include industrial waste, landfill leachate, road salt, tree/lawn pesticides, herbicides, septic system effluent, oil/gasoline, animal waste and household chemicals.

Landowners share the joint responsibility with Federal, State, County and local governments to protect Illinois' groundwater resources. State efforts to protect groundwater are spread out among multiple agencies and have complex laws. Recognizing the need to unify the State's groundwater protection program, the Illinois Groundwater Protection Act (415 ILCS 55/) was passed in 1987. Its intent was to protect Illinois' groundwater reserves as a natural and public resource. At the local level, the Cook County Dept. of Public Health has an office in Rolling Meadows if you'd more information on keeping groundwater safe. Their website is <https://cookcountypublichealth.org/environmental-health/water-and-sewage/> or call 847-818-2841.

There's a user-friendly website created and maintained by the University of Illinois which provides a resource library and excellent information on wells and septic systems. Their educational webinars and information are free, and their website is <https://privatewell-class.org>

The threat of groundwater pollution can be reduced by ongoing education and continued adoption of best management practices. For more information, take a look at the Illinois EPA website on groundwater: <https://epa.illinois.gov/topics/water-quality/groundwater.html> or reach out to Wheeling Township's Road Management Manager, Mark Toberman.

THE WHEELING TOWNSHIP COMMUNITY MENTAL HEALTH BOARD

MISSION:

To ensure that services related to mental illness, developmental disabilities, and substance abuse are available and known to the residents of Wheeling Township.

VISION:

To support the mental, intellectual, and developmental health of Wheeling Township residents through access to community-based services that provide a cost-effective and accessible continuum of care. To identify areas where existing services may be lacking and effectively allocate resources to agencies capable of filling those gaps. To collaborate with members of the community and providers of service to identify the necessary resources for the functioning of the community mental health system.

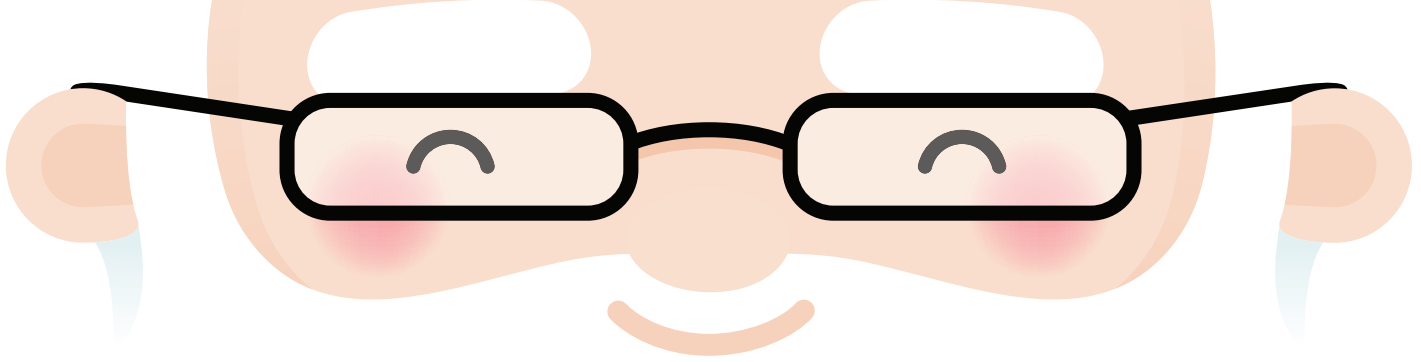
PURPOSE/PHILOSOPHY:

The Illinois Community Mental Health Act mandates that each Community Mental Health Board in the state:

- Review and evaluate community mental health services and facilities.
- Plan for programs of community mental health services and facilities.
- Consult with others regarding the most efficient delivery of services.
- Recommend distribution of funds to mental health services and facilities.

The Board is committed to following these mandates by engaging in policy development and communication with service providers and community members to ensure that services for mental health, developmental disabilities, and substance abuse are available and accessible.

The Wheeling Township Community Mental Health Board is seeking every household's input for the Community Survey. Please take the time and complete the survey. The completed survey must be returned by October 20, 2023. They may be mailed to, or dropped off at our office at: 1616 N. Arlington Heights Rd., Arlington Heights, IL 60004 or emailed to wt708mhb@wheeling-township.com.



Be A Santa This Season...

Ever wondered what it feels like to be Santa? It's much more than putting on the big red suit; it's the feeling you get by sharing the joy of the season with someone else. A great way to experience that warm, heart-filled-to-the-brim happiness is to help a neighbor! Wheeling Township is seeking donations for this year's Thanksgiving and Adopt-A-Family for Christmas Programs – here's how you can participate!

Thanksgiving Baskets: Participants provide a Thanksgiving basket filled with traditional fixings for a family from our community, along with a gift card for the perishable items. A list of items and drop off information will be provided after your sign up has been confirmed.

Adopt-A-Family for Christmas: Participants provide gifts for a low-income family from our community based on their "Wish List" with clothing and toy suggestions. Donors who commit to adopting a family are asked to spend between \$75 and \$100 per person. Family sizes vary and are chosen by the donor. After signup is confirmed, detailed instructions will be provided to the donor, which helps to make this large program run smoothly.

To participate in either program, please follow these instructions:

1. Complete the form below.
2. Email it to: GA@wheelingtowship.com OR fax it to: 847-259-1570 OR mail it to: Wheeling Township AFP, 1616 N. Arlington Heights Road, Arlington Heights, IL 60004 by **November 1st**.
3. After signup, you will receive a confirmation with detailed instructions.
4. Drop off your basket or gift bundle on your assigned date.
5. Enjoy your holiday knowing that you warmed the hearts of a neighbor!



Name _____

Company _____

Address _____

City, State, Zip _____

Phone _____ Fax _____

Email (must include): _____

Number of Thanksgiving Baskets you will provide _____

Size of family you wish to Adopt for Christmas _____



SENIOR AND DISABILITY NEWS

Call 847-259-7730 to register for any of the Programs & Services offered through Wheeling Township.

Home Delivered Meal Program

If you have concerns about your ability to shop or cook for yourself (or know someone who might need help), consider Wheeling Township's Home Delivered Meal Program. The Township offers a reasonably priced home-delivered hot meal program for residents of the Township who meet eligibility requirements.

How does the program work?

A hot, freshly prepared meal is delivered at mid-day, Monday through Friday, right to the door of the recipient by a friendly volunteer. Applicants must agree to receive meals five days a week for at least 30 days.

Cost of the meals?

Wheeling Township's program is a self-pay program: The hot meal is \$8.00 per day. A cold meal (which is delivered at the same time) is available for an additional \$5.75 per day. Bills are mailed monthly for the meals received.

Who is eligible?

- Must be a resident over 60 or permanently disabled over 18
- Must reside within Wheeling Township
- Must be considered homebound and/or no longer driving
- Must not have a full-time caregiver
- There must be availability on a route

If you're interested in finding out more about the program, call Kathy Lewiston, our Home Delivered Meal Program Coordinator, at 847-259-7730, ext. 19, or send an email to: HomeDeliveredMeals@WheelingTownship.com.

Interested in Volunteering?

We're always looking for a few more friendly faces! Come join our amazing team – this program is successful because of the many dedicated volunteers who deliver meals throughout the year. Home Delivered Meal Program Volunteers must be available between 11am – 1pm. Routes and days are pre-assigned. For more information, call our Home Delivered Meal Program Coordinator, Kathy Lewiston, at 847-259-7730, ext. 19. Or send an email to HomeDeliveredMeals@WheelingTownship.com

Know Your Rights as a Tenant

Friday, November 3
In-person presentation
at Wheeling Township
10 a.m. – 11:30 a.m.

North Suburban Legal Aid Clinic Housing Staff Attorney, Elizabeth Temkin, will discuss tenants' rights, evictions, and will provide advice for tenants who may be experiencing housing issues. Space is limited; reservations required. Call the Township to register: 847-259-7730.



Meal Delivery Volunteers, Jack & Diane

Medicare can be complicated... SHIP Can Help!!

If you are enrolled in Medicare, are close to enrolling in Medicare, or have health insurance questions, Wheeling Township's SHIP Counselors may be able to help you. Our dedicated and knowledgeable volunteers are extensively trained by the **Illinois Department On Aging** to assist Medicare participants with understanding their benefit coverage, helping with filing medical bills and claims, explaining Medicare Supplemental and Part D Insurance, and providing resolution support for problems.

Our SHIP counselors are here to help! Last year, Wheeling Township's SHIP counselors assisted over 400 residents. They're especially busy during the annual Open Enrollment period – call to make an appointment to see one of our dedicated SHIP counselors today. Call the Township at 847-259-7730.



ALZHEIMER'S CAREGIVER SUPPORT GROUP

Meets on Zoom 3rd Tuesday
of every month • 1pm – 2:30pm



Providing care for someone with memory loss can be a labor of love, but it can also be exhausting and stressful. Wheeling Township partners with the Alzheimer's Association, Greater Illinois Chapter, to offer a monthly support group for caregivers of individuals with Alzheimer's disease. Lynndah Lahey, Wheeling Township's Director of Senior & Disability Services facilitates this group, encouraging caregivers to maintain their personal, physical and emotional health.

Meetings are held on Zoom the 3rd Tuesday of every month, 1pm – 2:30pm. Please contact Lynndah Lahey at 847-259-7730, ext. 21 for more information.

VIP-VISUALLY IMPAIRED SUPPORT GROUP

Meets on Zoom:
1st Thursday of
every month,
1:00 p.m. – 3:00 p.m.



If you have any type of vision loss, Wheeling Township's VIP Visually Impaired Support Group might be of help to you! Share with others, socialize, learn from educational presentations and find out about other services available to you. Started in 2000, the VIP group has over 40 members with eye conditions ranging from AMD and Glaucoma to total blindness.

The VIP Group meets on Zoom the 1st Thursday of every month, from 1 – 3:00 pm. Please call Lynndah Lahey, Director of Senior & Disability Services, at 847-259-7730, ext. 21 to learn more about this great support group.

WHEELING TOWNSHIP TRANSPORTATION

...So much more than just a ride!

Looking for safe and affordable transportation? If you are over 60 (or 18+ and permanently disabled), Wheeling Township's outstanding transportation service may be the perfect solution for your needs.



When is service available? Rides are available for Township residents to a wide variety of locations anywhere within Wheeling Township, Monday – Friday, 9:00 am - 3:30 pm. Call as soon as possible to reserve your ride, as buses fill up quickly (you may call up to 30 days in advance for medical appointments). Additionally, if you need to get to a medical location outside the Township, you may be eligible to participate in the TRIP Program – call for more information.

How much? \$2 each way within the Township

How do I sign up? Call the transportation department with questions – or for an application. Applications can also be found online at wheelingtowship.com.

Call the Transportation Department for more information: 847-259-7743.

ANNUAL HOLIDAY LIGHTS TOUR

Wednesday, December 6th

It's back! If you are a registered Wheeling Township bus passenger, call our Transportation Department at 847-259-7743 to make your reservation for our festive Holiday Lights tour – it's our annual neighborhood bus event to let you see the beautiful holiday lights in our community! **Date: Wednesday, December 6th; time: 5pm.**



This event is intended for our Township's seniors and disabled residents who aren't able to get out to see the lights on their own – it is not for children or groups. All passengers must live in Wheeling Township, and every participant must already be a registered bus rider. We cannot accommodate any last-minute additions or extra guests.

We will pick you up at your home and take you on an evening tour of the holiday lights in Wheeling Township and return you safely home after the tour, so visions of sugar plums can dance in your head. We even have volunteer "elves" on each bus!

Calls for reservations **begin on Wednesday, November 1.** It is first come, first served. Space is limited and you must be a registered rider to participate.

Help Support Our Troops...

We're holding our Donation Drive this year!

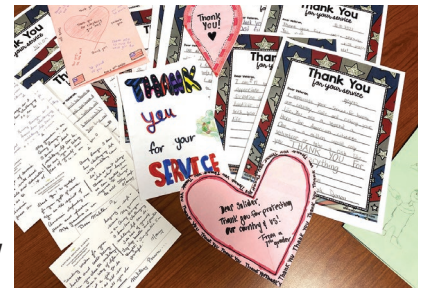


During the entire month of November, Wheeling Township - in partnership with Operation Support Our Troops, America Inc. (OSOT) -- will be holding its annual donation drive. We're collecting the items below for "Comfort & Care" packages that OSOT puts together and ships to active Troops around the world. **Donations will be accepted the entire month of November.**

Let's see if we can top 2022's donation levels. Last year, 2,000 pounds of goodies were collected, as was an amazing \$4,965 in financial contributions! Over 1,000 hand-written cards, letters or drawings were donated, too. Let's see if we can beat that!

ITEMS MOST REQUESTED:

1. PB & Jelly (28 oz or less/no glass)
2. Pop-Tarts/breakfast bars, granola bars
3. Canned fruit or fruit cups (16 oz or less/no glass)
4. Crackers/nuts/cookies/candy (individual pks)
5. Gum/fruit snacks/raisins krispie treats (individual pks)
6. Individual mac & cheese
7. Toothbrushes/dental floss/travel size products
8. White or black athletic socks for men/women
9. Beef jerky/Slim Jims
10. Cold/hot drink mixes (individual packets/sticks)
11. Antacids/eye drops/handi-wipes/sanitizer
12. Pringles/crackers/cookies (snack bag size)
13. Halloween candy is welcomed



You can also contribute to Operation Support Our Troops, Inc. by:

- **Making a monetary donation via check:**

Donations help cover the cost of postage (each box costs OSOT \$25 to ship). Make checks payable to Operation Support Our Troops – America, Inc. Please note that OSOT is a 501(c)3 not-for-profit organization, meaning your donation to them is tax deductible and they will send you a thank you letter.

- **Writing Letters of Encouragement:**

The most coveted items in care packages are letters of encouragement or pictures from school kids. NO HOLIDAY CARDS, please!

Only cards or letters that can be used throughout the year are requested. Whether a scribbled drawing from a 1st grader or a heartfelt letter from a homebound senior, each message is precious and appreciated. Every care package sent to military personnel includes at least one letter or drawing. Address your letter or card to: "Dear Military Person." Please **do not seal** any letters or cards.

Donations of goodies, checks and letters can be dropped off at Wheeling Township, 1616 N. Arlington Heights Rd., Arlington Heights, **during the entire month of November (9:00am - 4:30pm).** Thank you in advance for supporting our Troops! For more information, call Lynndah Lahey, Director of Senior & Disability Services at 847-259-7730, ext. 21, or email: LLahey@wheelingtowship.com.



Wheeling Township Report, Inc.

1616 N. Arlington Heights Road
Arlington Heights, IL 60004
847-259-7730

www.wheelingtowship.com

Hours: 9 a.m. - 4:30 p.m. weekdays

Township Board Meetings: 8:00 p.m.
on the fourth Tuesday of each month

Follow us on:



ECRWSS
NON PROFIT
ORGANIZATION
U.S. POSTAGE
PAID
PALATINE P&DC IL
PERMIT NO 2597

ECRWSS

Residential Postal Customer

WHEELING TOWNSHIP ELECTED OFFICIALS



Kathy Penner
SUPERVISOR



Ken Jochum
ASSESSOR



Joanna Gauza
TOWN CLERK



Patricia Kozicki
TRUSTEE



Jeanne Hamilton
TRUSTEE



Joe Murglin
TRUSTEE



Darrel Talken
TRUSTEE

Top 5 Food Pantry Items Needed

Looking for a way to help? Please consider purchasing some of these non-perishable items on your next trip to the grocery store:

Food Pantry Fall Top 5

- Meat Products: Corned Beef Hash, Beef Stew, Beef Chili
- Fruit: Pears, Peaches, Pineapple, Apple Sauce
- Pancake Mix/Pancake Syrup
- Jelly or Fruit Preserves
- Beans: Red Kidney Beans, White Northern Beans, Cannellini Beans

If you are unable to shop and would prefer to make a monetary donation, checks should be made payable to "Wheeling Township Emergency Fund, Inc.," which is a 501(c)(3) not-for-profit organization.

FUNDING FOR THESE AGENCIES PROVIDED BY WHEELING TOWNSHIP

Wheeling Township funds a variety of important human care services for residents of all ages. Because of Township funding, services provided by these agencies are available to residents on a sliding-scale basis.

- Ascension Center for Mental Health
- Avenues to Independence
- Northwest Compass
- Center For Enriched Living
- Children's Advocacy Center
- Clearbrook
- Connections to Care
- FamilyForward
- The Harbour
- Hands On Suburban Chicago
- Journeys | The Road Home
- Kindred Life Ministries
- Life Span
- Little City Foundation
- NCH Foundation-Mobile Dental Clinic
- Omni Youth Services
- Resources for Community Living
- Shelter, Inc.
- Hopeful Beginnings of St. Mary's
- Suburban Primary Healthcare - Access to Care
- The Josselyn Center
- WINGS